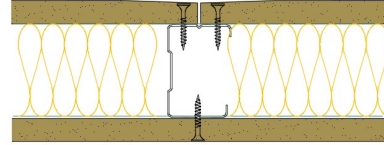


50-B-51(50) - SPEEDLINE System Data Sheet - Version V1 (24-10-23)

SPEEDLINE 50mm 'C' Stud Partition @600mm Ctrs,
with BG Gyproc 12.5mm WallBoard each side,
50mm APR



System Performance Breakdown

Fire Resistance:

BS476 Part 22:1987:

Test Ref & Date or Applied Ref & Report:

Max Height:

Thickness:

Duty Grade: BS 5234: Part 2:1992:

Sound Insulation:

30/30 Minutes (Integrity/Insulation).

BTC 17439F - BRE Report P102396-1011A

Refer to Speedline Specification Clause

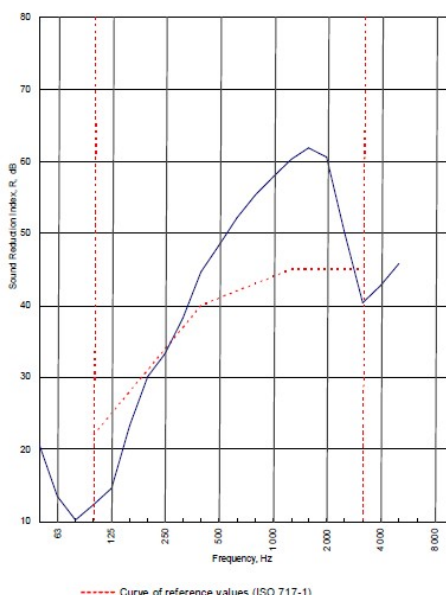
77 mm. (At Base Track, Excluding Finishes)

Medium - Annexes A-F

41 R_w dB, Date Tested or Assessed Against - 12/07/2011

Test Code:
H17476AA
Test Date:
12/07/2011

Freq. Hz	R dB
50	20.8
63	13.5
80	10.2
100	12.3
125	14.6
160	23.3
200	30.1
250	33.3
315	38.2
400	44.7
500	48.3
630	52.2
800	55.3
1000	57.8
1250	60.2
1600	61.9
2000	60.6
2500	50.0
3150	40.3
4000	42.8
5000	45.8
6300	
8000	
10000	



Rating according to BS EN ISO 717-1:1997	R_w (C;Ctr) = 41 (-4;-11) dB
Evaluation based on laboratory measurement results obtained by an engineering method:	Max dev. 10.4 dB at 125 Hz
	C_{50-250} = -5 dB C_{50-500} = -5 dB $C_{100-500}$ = -4 dB
	C_{5-250} = -14 dB C_{5-500} = -14 dB $C_{5-100-500}$ = -11 dB

TESTED AT ONE OF THE UKAS ACCREDITED LABORATORIES BELOW

- B.T.C (H-Ref on Graph)
- B.R.E
- AIRO
- S.R.L

Customer: Metsec plc Hepsec Division

BTC 17476A: Page 9 of 11

